

Craven Gardens Wimbledon, SW19 8LU

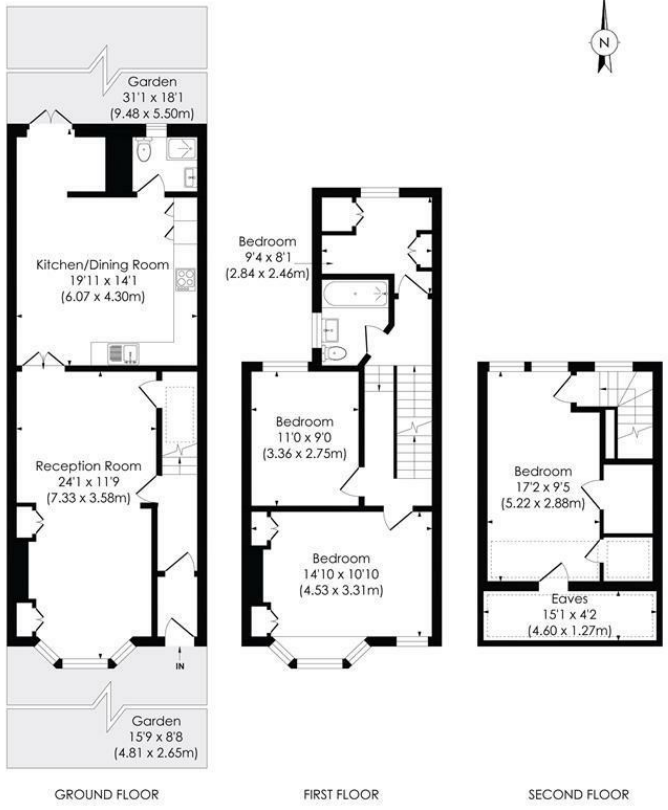
Offers In Excess Of £1,100,000 Freehold



A wonderful characterful four bedroom Edwardian semi-detached family home located on this sought after quiet road close to Wimbledon town centre. At over 1400 sq/ft the house boasts numerous period features. On the ground floor is a large front reception room, open plan kitchen and dining room and bathroom with doors out to a private garden. Upstairs are three good sized bedrooms, a family bathroom and a large principal bedroom in the converted loft. In addition there is potential to extend further subject to the usual consents and as these properties rarely become available an early viewing is recommended.

Craven Gardens, SW19

Approx. Gross Internal Floor Area
1414 Sq. ft/131.35 Sq. m (Incl. RHH)
1300 Sq. ft/120.73 Sq. m (Excl. RHH)



© Pixangle Property Marketing Ltd. info@pixangle.com Tel: 0208 870 2118
 This floor plan has been prepared for the purpose of illustration only in accordance with the latest RICS code of measuring practice and is not to scale. All measurements and areas are approximate and whilst every effort has been made to ensure the accuracy of the plan contained here, no responsibility is taken for any error, omission or misstatement.

- Four Bedroom Period House
- Two Bathrooms
- Open Plan Kitchen Diner
- Through Reception Room
- Private Garden
- Sought After Quiet Road
- Close to Excellent Schools, South Park Gardens & Wimbledon Town Centre
- Potential to Extend STPP
- EPC Rating D
- Council Tax Band F

| Energy Efficiency Rating | | Current | Potential |
|---|---|-------------------------|-----------|
| Very energy efficient - lower running costs | | | |
| (92 plus) | A | | |
| (81-91) | B | | 82 |
| (69-80) | C | 67 | |
| (55-68) | D | | |
| (39-54) | E | | |
| (21-38) | F | | |
| (1-20) | G | | |
| Not energy efficient - higher running costs | | | |
| England & Wales | | EU Directive 2002/91/EC | |

For Free Mortgage Quote and Best Mortgage Rates, call an Ellisons Mortgage Advisor on 020 8944 9494



Although these particulars are believed to be correct, their accuracy is not guaranteed and they do not form part of any contract.

Celebrating 30 years of successful Sales and Lettings in Merton

